

ZEHUS

h u m a n +

start here
inizia da qui
starten hier
commencez ici

BIKE+

all in one

download the user manual here:
scarica il manuale utente qui:
laden Sie das Benutzerhandbuch hier herunter:
téléchargez le manuel d'utilisation ici:



<http://www.zehus.it/downloads/>

0

- internet connection needed
- necessaria connessione internet
- Internetverbindung erforderlich
- connexion Internet nécessaire



1

- download the app
- scarica l'app
- Laden Sie die App herunter
- téléchargez l'app

Zehus BIKE+

iPhone



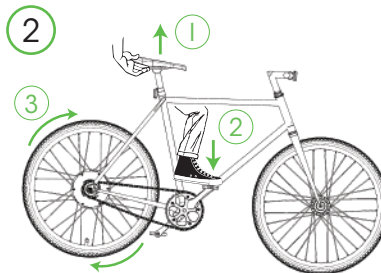
<http://goo.gl/HEtDuh>

Android™



<http://goo.gl/8Mv70I>

2



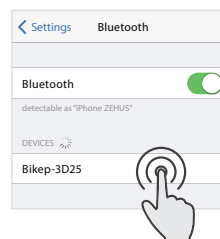
- spin the rear wheel to turn on BIKE+ all in one
- fai girare la ruota posteriore per accendere BIKE+ all in one
- drehen Sie das Hinterrad um BIKE+ all in one Einzuschalten
- tournez la roue arrière pour démarrer BIKE+ all in one

3

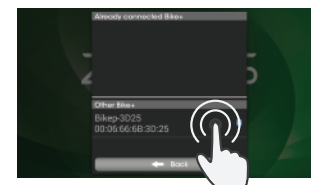
- connect BIKE+ all in one
- connetti BIKE+ all in one

- verbinden sie BIKE+ all in one
- connectez BIKE+ all in one

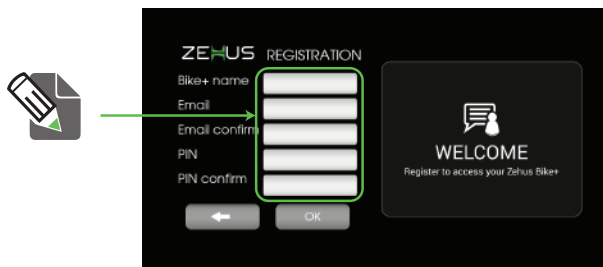
iPhone



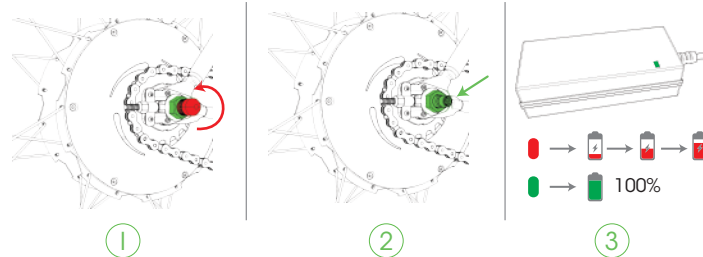
Android™



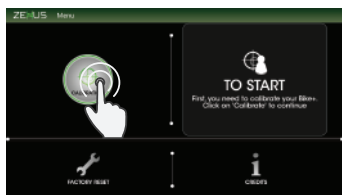
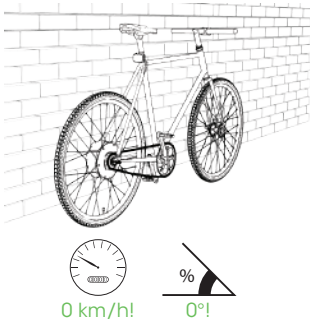
- 4 - register BIKE+ all in one
- registra BIKE+ all in one
- BIKE+ all in one anmelden
- enregistrez BIKE+ all in one



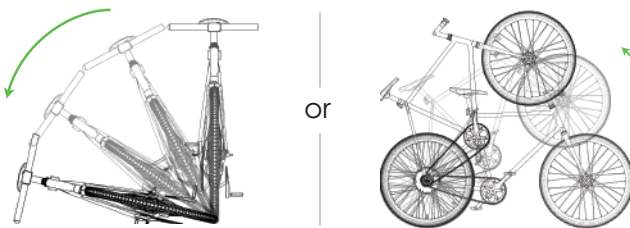
- 8 - charging BIKE+ all in one
- caricare BIKE+ all in one
- BIKE+ all in one aufladen
- chargez BIKE+ all in one



- 5 - calibrate the slope sensor
- calibra il sensore di pendenza
- Neigungssensor kalibrieren
- calibrez le capteur de pente

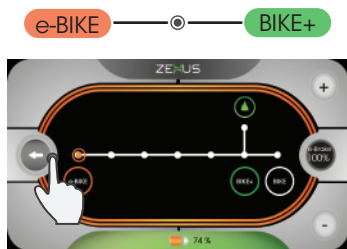


- 9 - lean the bike to turn it off
- inclina la bici per spegnerla
- Rad neigen um es abzuschalten
- penchez le vélo pour l'arrêter



- 6 - choose your power mode
- scegli la tua modalità di assistenza
- Unterstützungsstufe wählen
- choisissez votre niveau d'assistance électrique

- tip: try the e-BIKE mode first!
- per iniziare, prova la modalità e-BIKE!
- e-BIKE-Modus versuchen Sie zu beginnen
- pour commencer, essayez la modalit  e-Bike



IMPORTANT SAFETY NOTES! NOTE DI SICUREZZA IMPORTANTI!

- Always use the bike with the protective close nuts
- Always turn off BIKE+ all in one during maintenance, servicing and handling
- Protect BIKE+ all in one from severe heat, fire and high pressure water-jets
- DO NOT open the unit yourself
- Charge the battery in a dry and clean environment

- Utilizzare SEMPRE la bici con i dadi chiusi di protezione
- Spegner SEMPRE BIKE+ all in one durante tutte le operazioni di manutenzione
- Proteggere BIKE+ all in one da temperature elevate, fuoco e getti di acqua ad alta pressione
- NON aprire l'unit 
- Utilizzare il caricabatteria solo in un ambiente asciutto e pulito

SICHERHEITSHINWEISE! NOTE DE S CURIT 

- Rad nur mit sicher festgezogenen Sicherungsmuttern benutzen
- Schalte BIKE+ all in one immer aus, w hrend der Wartung und Pflege
- Sch tze BIKE+ all in one vor Hitze, Feuer und Wasserhochdruck
- Ein selbstst ndiges Offnen des BIKE+ all in one Systems f hrt zum Erlischen der Garantie
- Batterie in eine trockenen und sauberen Umgebung aufbewahren und laden

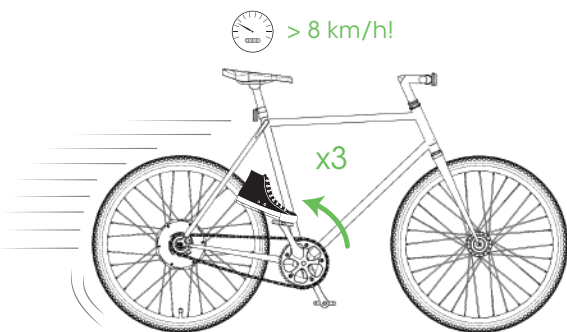
- Utilisez toujours le v lo avec les  crous de protection
-  teignez BIKE+ all in one pendant toutes les op rations de manutention
- Prot gez BIKE+ all in one contre la chaleur, le feu et les jets d'eau   haute pression
- N'ouvrez PAS l'appareil
- Utilisez le chargeur uniquement dans un environnement sec et propre

- 7 activate BIKE+ all in one:
1 - push the bike up to 8 km/h
2 - back-pedal per 3 revolutions

- attiva BIKE+ all in one:
1 - arriva fino a 8 km/h
2 - pedala all'indietro per 3 giri pedale

- Aktivieren des BIKE+ all in one:
1 - Anschubhilfe bis zu 8km/h
2 - Bremswirkung pro 3 Umdrehungen

- pour activer BIKE+ all in one:
1 - p dalez jusqu'  8 km/h
2 - retrop dalez 3 fois



"Made for iPhone." means that an electronic accessory has been designed to connect specifically to iPod, iPhone, or iPad, respectively, and has been certified by the developer to meet Apple performance standards. Apple is not responsible for the operation of this device or its compliance with safety and regulatory standards. Please note that the use of this accessory with iPod, iPhone, or iPad may affect wireless performance rights or other intellectual property rights.

This document is subject to change without notice.

